



The Housing Toolkit

Helping individuals with Autism and their families navigate the Newfoundland & Labrador housing support system.

The Housing Toolkit | Acknowledgments

This Toolkit was written and designed by Autism Nova Scotia. The organization would like to thank the staff of the Autism Society of Newfoundland & Labrador for their support and feedback during the review process.

We would like to take this opportunity to thank our partners, AIDE Canada and the Public Health Agency of Canada for their funding and support during the creation of the Housing Toolkit.

Copyright © 2021. Autism Nova Scotia



Public Health
Agency of Canada

Agence de la santé
publique du Canada



The Housing Toolkit | Index

The Housing Toolkit Index	1
Where to Start	2
Newfoundland & Labrador	3
What is the Department of Health & Community Services	4
How do I decide what is the best option?	5
How to apply for support?	6
What is the Persons with Disabilities Support Program?	7
What is the Income Support Program?	8
How to apply for Income Support?	9
Deciding where to live	10
What housing options are available for adults?	11
Licensed Housing Options	12
Unlicensed Housing Options	13
What is NLHC?	14
NLHC Programs	15
NLHC-Rental Housing Program	16
NLHC-Funding Programs	17
I have more questions-where do I go?	18

What is the Housing Toolkit?

The Housing Toolkit helps individuals with autism and their families learn how to access housing and funding in Newfoundland & Labrador.

The Housing Toolkit explains:

- Who to reach out to for help
- How to reach out for help
- How an individual qualifies for help
- Housing Options
- Funding Options
- Support Options



Newfoundland & Labrador-Zones

There are four regional zones that are in charge of support for persons with disabilities. The number for each zone are below:

1. Eastern Regional Health Authority Numbers:

St. John's: (709) 777-6300

Rural Avalon: (709) 945-5111

Bonavista, Clarenville: (709) 468-5243

Burin: (709) 891-5025

2. Central Regional Health Authority Numbers:

Gander: (709) 256-2500

Grand Falls-Windsor: (709) 292-2500

Central Health Corporate Office: (709) 292-2138

3. Western Regional Health Authority Numbers:

Corner Brook: (709) 637-5000

Stephenville: (709) 643-8700

4. Labrador-Grenfell Regional Health Authority Numbers:

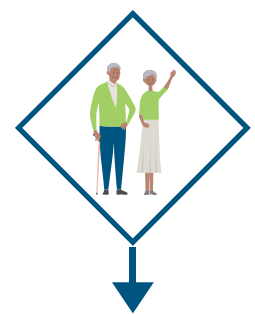
St. Anthony: (709) 454-3333

Happy Valley-Goose Bay: (709) 897-2000

Labrador City: (709) 944-2632

The Department of Health & Community Services (DHCS) is part of the Government of Newfoundland & Labrador. DHCS helps individuals and families through services broken into 4 silos.

Department of Health & Community Services



Health Services	Child, Youth & Family	Person with Disabilities	Seniors
<ul style="list-style-type: none"> • Aboriginal Health • Dental Services • Public Health • Health Promotion & Wellness • Medical Care Plan • Mental Health 	<ul style="list-style-type: none"> • Eye See Eye Learn • Prescription Drug Plan <p>Visit the Department of Children, Seniors & Social Development, and Department of Education & Early Childhood Development for more resources and services.</p>	<ul style="list-style-type: none"> • Special Child Allowance Welfare Program • Special Assistance & Drug Program • Intervention Services • Provincial Home Support Program • Therapeutic and Professional Services 	<ul style="list-style-type: none"> • Housing • Nursing Homes and Personal Care Homes • Health Services • Community Support Services

Care Coordinator

A Care Coordinator will help an individual find the best funding and support option for them.

Role of the Care Coordinator:

- The Care Coordinator will be assigned after an individual calls the Department of Community Services to set up an intake appointment.
- The Care Coordinator will work with each individual to complete a financial and functional needs assessment.
- The Care Coordinator will determine how much assistance is available for an individual after their assessments are completed.
- The Care Coordinator will determine what housing option is available for an individual based on their assessment.
- An individual will have the same Care Coordinator unless they move to a different zone or province.



When determining an individual's eligibility they must contact their Regional Health Authority (RHA) for an intake appointment to determine the individual's care plan moving forward.

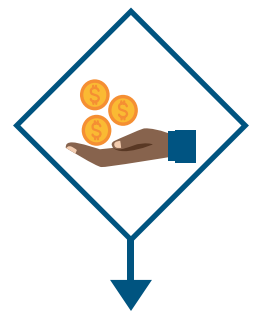
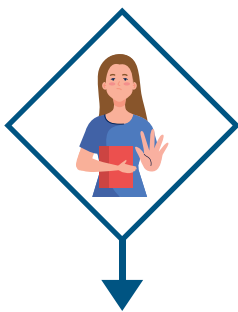
Department of Health & Community Services

Learn how to contact the Department of Health & Community Services (DHCS) for help:



Persons with Disabilities is a sector of the Department of Health & Community Services. They help individuals with disabilities who are eligible to access support and housing.

Persons with Disabilities



Intervention Services	Residential Services	Employment Services	Financial Services
<ul style="list-style-type: none"> • Direct Home Services • Intensive Applied Behaviour Analysis (ABA) • JASPER Intervention Summary • Community Behavioural Services • Provincial Home Support • Therapeutic & Professional Services 	<ul style="list-style-type: none"> • Cooperative Apartment Program • Alternative Family Care Home Program • Board & Lodging Supplement • Individualized Living Arrangements • Shared Living Arrangements 	<ul style="list-style-type: none"> • Job Trainer Support • Opening Doors Program • Career Development Initiative for Agencies, boards, Commissions & Crown • Wage Subsidy Initiative • Student Summer Employment 	<ul style="list-style-type: none"> • Child Care Subsidy • Disability Tax Credit • Registered Disability Savings Plan • Child Disability Benefit • Special Child Welfare Allowance Po

The Department of Advanced Education, Skills, & Labour will help individuals in need with financial support to pay for their basic needs. Other support may be provided depending on a persons' situation.

Income Support



Non-Basic Benefits

1. Municipal Tax Payments
2. Eye Exams and Prescription Glasses
3. Housekeeper's Allowance
4. Transportation
5. Private Childcare
6. Expenses for Burials

May also obtain certain benefits from government depending on their situation:

- Prescription Drug Card
- Medical Supplies & Equipment
- Medical Transportation



Basic Benefits

- Family and Individual Benefit (to assist with expenses of food, clothing, personal care, household maintenance and utilities).
- Shelter (Including rent and mortgage).

The Department of Advanced Education, Skills, & Labour provides individuals in need with financial support to pay for their basic needs. Below explains the process of applying for Income Assistance.

Applying for Income Support

Learn how to contact the Department of Advanced Education, Skills, & Labour (DAESL) for help

CALL YOUR LOCAL DAESL #

To be eligible for Income Assistance:

- 18 years of age.
- Resident of Newfoundland & Labrador.
- Submit an application for benefits.
- Be deemed eligible by your financial assessment.

Call the Income Support Number, DAESL will ask for you to have:

- Names, MCP numbers and birth information for you, your spouse and children living with you.
- Social Insurance Numbers for you and your spouse.
- Financial information regarding assets such as your bank savings and RRSPs.
- Information about your family's living accommodations.
- All sources of income in the past 60 days.
- All sources of income to which you believe you and your family are entitled.
- Any special needs for you or your family.

- DAESL will call to let you know if you are eligible for Income Assistance and what amount you will receive.
- If you do not receive the decision, you have 15 days to appeal the decision.

How to choose a housing option?

The Department of Health & Community Services (DHCS) will assign a RHA consultant to work with an individual and their family to determine what the best option is for them.

Criteria to receive funding/housing help:

1. Have a confirmed diagnosis of a developmental and/or intellectual disability, long term mental health illness, and/or physical disability.
2. Complete a functional assessment with a RHA consultant to determine the amount of support an individual will need.
3. Complete a financial assessment with a RHA consultant to determine an individual's current income.



What is Housing?

- Housing is where someone lives.
- There are different options for where an individual can live.
- Department of Health & Community Services can help an individual find a home to fit their needs.

What are an individual's living options?

Residential Living Options:

- Cooperative Apartment Program.
- Alternative Family Care Home Program.
- Individualized Living Arrangements.
- Shared Living Arrangements.

Unlicensed Options:

- Living with their family/support network.
- Living in a community home.
- Live alone/with a roommate.



Licensed Options:

The Housing Options below are funded by the Persons with Disability Support program. The support will provide room and board as well as some personal support staff.

Licensed Housing Options

Cooperative Apartment Program

- Private residential setting staffed by a live-in supervisor and relief staff.
- Up to three adults with intellectual disabilities per apartment.

Individualized Living Arrangements

- Live alone in an apartment or house.
- Receive funding to help with basic needs through income support.
- Receiving funding for home support care.
Only option when no other options are available

Alternative Family Care Home Program

- Live with another family other than your own.
- Room and board, supervision and personal and social support included.
- Up to two unrelated adults with intellectual disabilities per home.



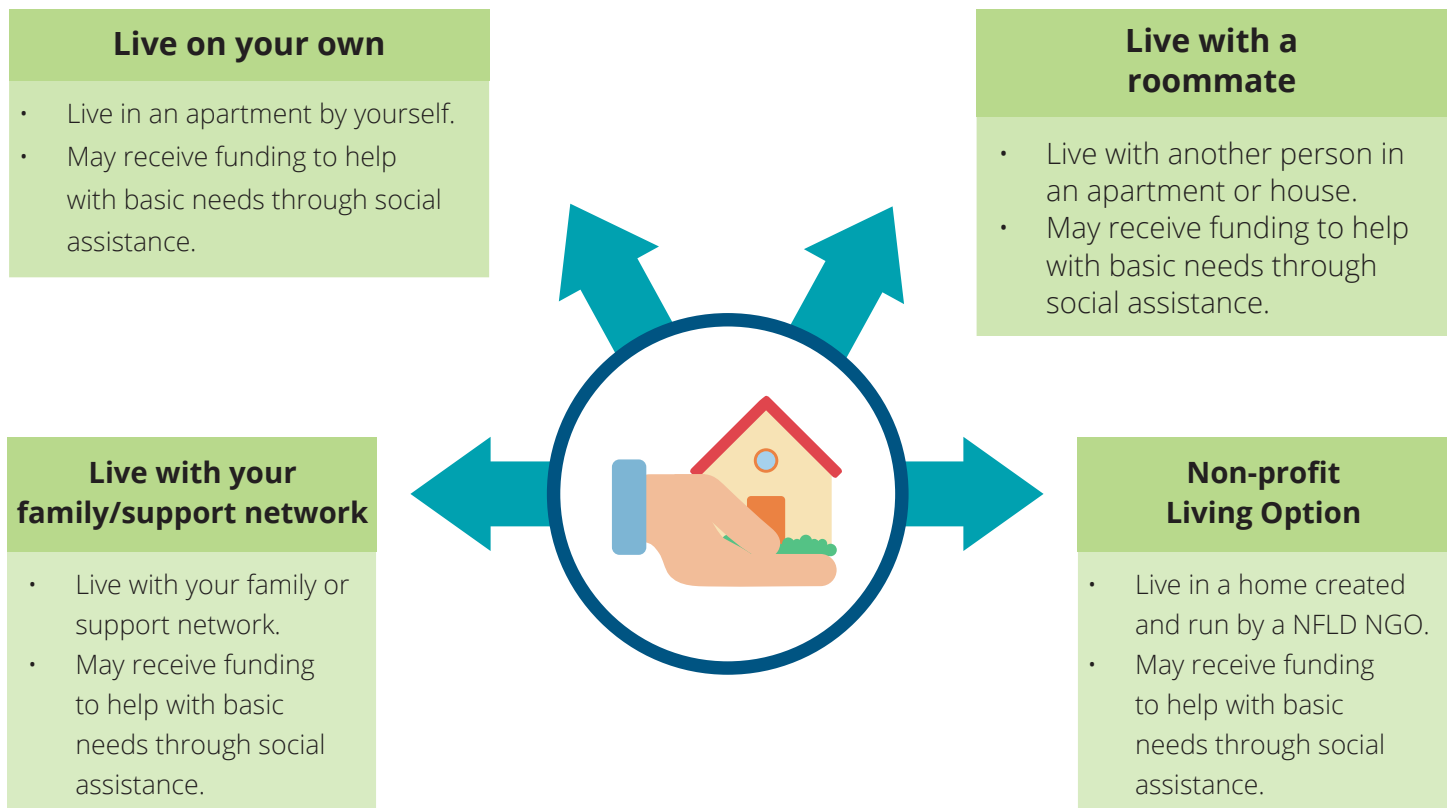
Shared Living Arrangements

- Live with another person needing support staff.
- Receive funding to help with basic needs through income support.

Unlicensed Options:

- Unlicensed home options are different than Licensed Homes.
- An individual and their support network are responsible for finding housing.
- The Persons with Disability Support Program or Income Support may provide a certain amount of money to help pay for support workers, rent, food, and utilities.

Unlicensed Housing Options



Newfoundland and Labrador Housing Corporation (NLHC):

- NLHC is responsible for public housing and housing support programs for the province of Newfoundland & Labrador.
- Your Regional Health Authority Coordinator may recommend NLHC as an option for you or your family depending on what your needs are.

NLHC Offices:

Avalon Regional Office: (709) 724-3197

Corner Brook: (709) 639-5201

Gander: (709) 256-1300

Goose Bay: (709) 896-1920

Grand Falls-Windsor: (709) 292-1000

Marystown: (709) 279-5375

Stephenville: (709) 643-6826



Housing NFLD:

Housing NFLD has options for living as well as programs to support families and individuals in need of financial help.

Newfoundland and Labrador Housing Corporation (NLHC) Programs



Housing Options

1. Rental Housing Program.



Funding Programs

1. Board and Lodging Supplement.
2. Rental Supplement Program.
3. Shelter Benefit Program.
4. Home Modification Program (HMP).
5. Provincial Home Repair Program (PHRP).

NLHC has a rental housing program to fit individuals and families living needs who are living in low-income situations. Regional NLHC office numbers are found on page 14.

NLHC-Rental Housing Program

Learn how to contact NLHC for housing assistance:

Call your regional NLHC office

You may be eligible for low-income housing if:

- Your total household income falls within certain income level.
- Your present housing is in good condition but you pay more than 30 percent of your total household income towards rent and heat.
- Your present housing is unsuitable, you pay less than 30 percent of your total household income but cannot afford rent for a house in good condition.

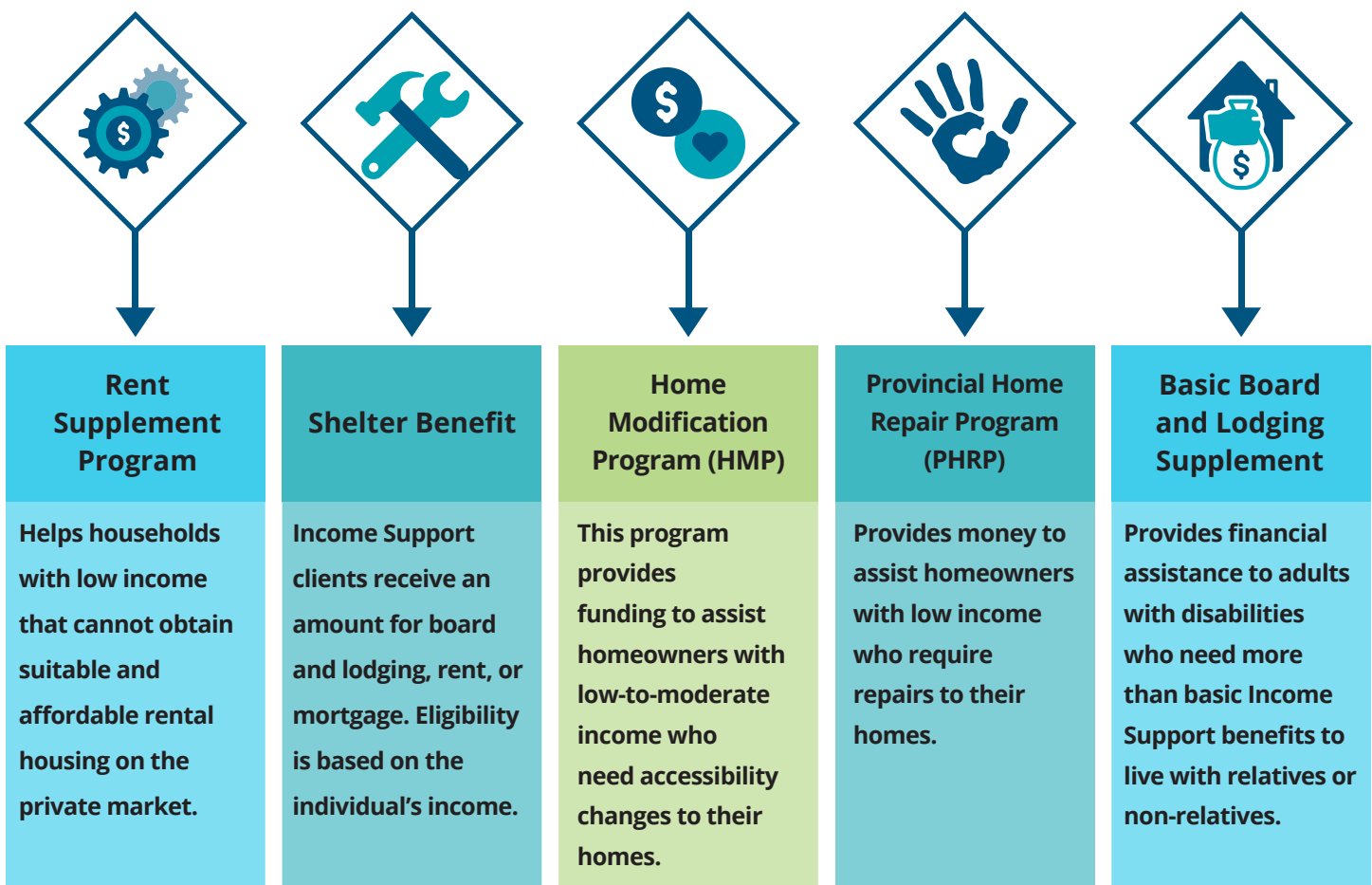
Where do you go to find low-income rental housing?

- NLHC rents houses for families and others in need of housing. Contact your nearest NLHC office who can provide you with a list of housing options in your area.
- Rent paid by low-income individuals is based on their income. If your rent is not paid through Income Support, your rent will be based on 25 percent of your total net monthly income.

Funding Programs:

NLHC has options to support families and individuals in need of financial assistance with rent, renovations, or emergency funds.

NLHC-Funding Programs



If you are looking for more information, use this list of resources:

Department of Health & Community Services (DHCS)

<https://www.gov.nl.ca/hcs/>

Persons with Disabilities-DHCS

<https://www.gov.nl.ca/hcs/personsdisabilities/fundingprograms-hcs/#scwap>

Disability Support through other Departments or Agencies

<https://www.gov.nl.ca/hcs/personsdisabilities/fundingprograms-other/>

Housing Support Programs

<https://www.gov.nl.ca/hcs/personsdisabilities/fundingprograms-hcs/#ro>

Newfoundland and Labrador Housing Corporation (NLHC)

<https://www.nlhc.nl.ca/housing-programs/rental-housing-program/>

Employment Opportunities for Persons with Disabilities

<https://www.gov.nl.ca/hcs/personsdisabilities/fundingprograms-other/#et>

Income Support

<https://www.gov.nl.ca/isl/income-support/>

Autism Society of Newfoundland & Labrador

<https://www.autism.nf.net/>

Choices for Youth-Housing

<https://www.choicesforyouth.ca/housing>